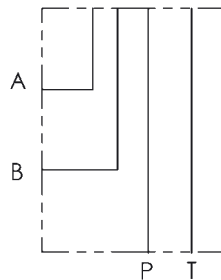
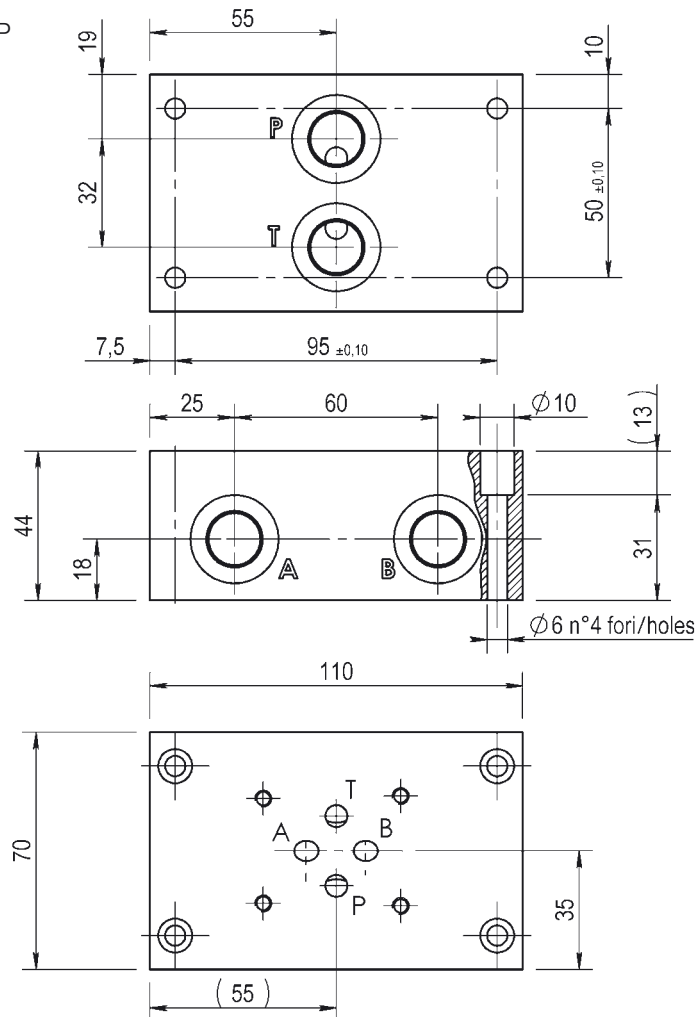
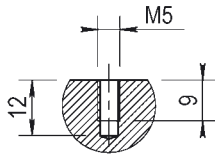


BASE CON COLLEGAMENTO  
P - T POSTERIORI e A - B LATERALI  
SINGLE SUBPLATE  
ON REAR P - T and ON SIDE A - B  
**CETOP 3 - NG 06**



Foro fissaggio CETOP  
Fixing CETOP holes



Versione standard in alluminio  
Standard type with aluminium

Pressione massima di lavoro = 300 bar  
Max working pressure = 300 bar

**Esempio codice di ordinazione - Ordering example**

**BSA 06 # PL**

Base in alluminio  
Aluminium subplate

CETOP 3 - NG 06

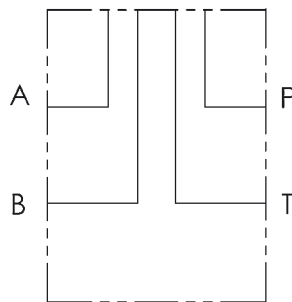
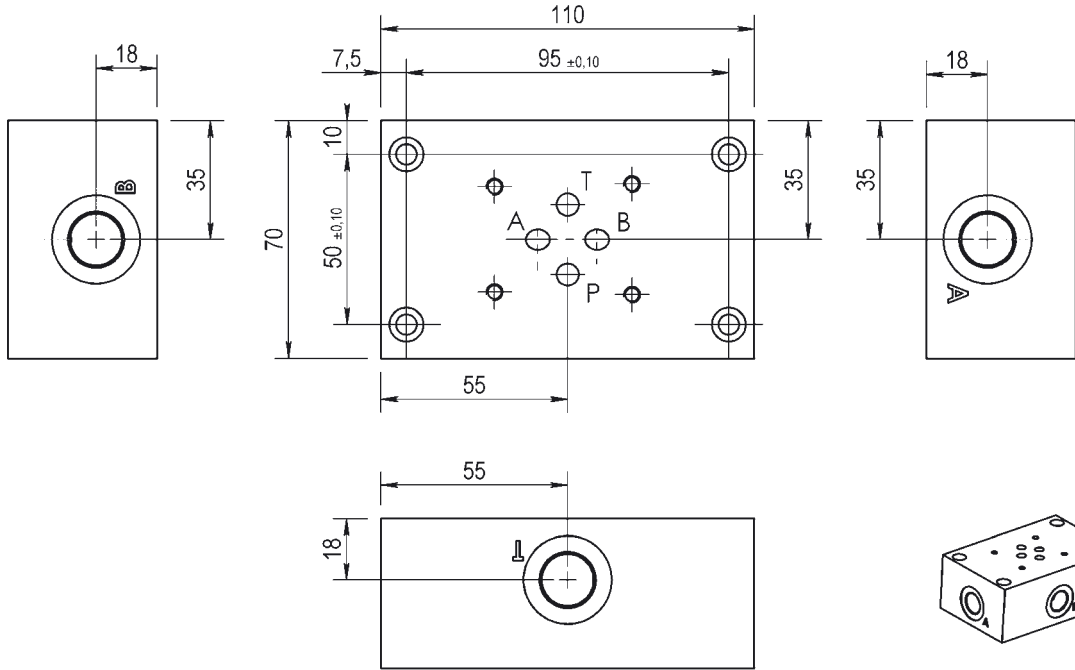
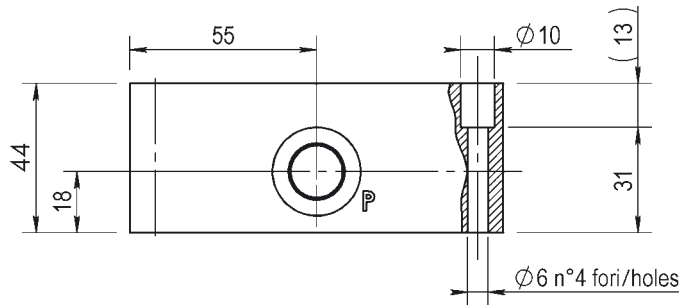
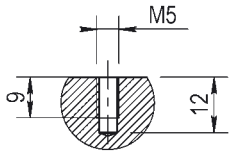
A = (P - T - A - B) G1/4  
B = (P - T - A - B) G3/8

(P - T) posteriori e (A - B) laterali  
On rear (P - T) on side (A - B)

BASE CON COLLEGAMENTO  
P - T - A - B LATERALI A CROCE  
SINGLE SUBPLATE  
WITH RADIAL SIDE P - T - A - B PORTS  
**CETOP 3 - NG 06**



Foro fissaggio CETOP  
Fixing CETOP holes



Versione standard in alluminio  
Standard type with aluminium

Pressione massima di lavoro = 300 bar  
Max working pressure = 300 bar

**Esempio codice di ordinazione - Ordering example**

**BSA 06 # L**

Base in alluminio  
Aluminium subplate

CETOP 3 - NG 06

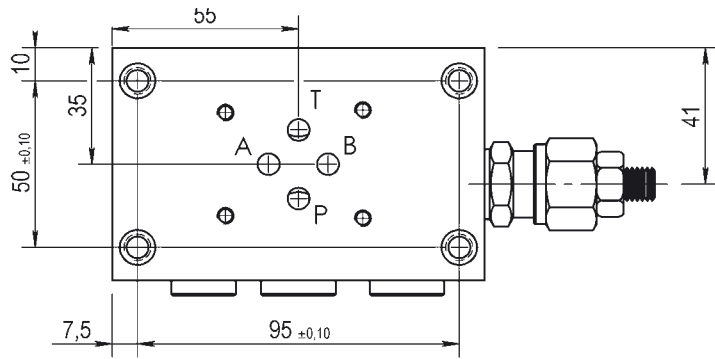
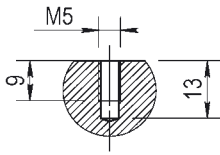
A = (P - T - A - B) G1/4  
B = (P - T - A - B) G3/8

(P - T - A - B) laterali a croce  
Radial side (P - T - A - B) ports

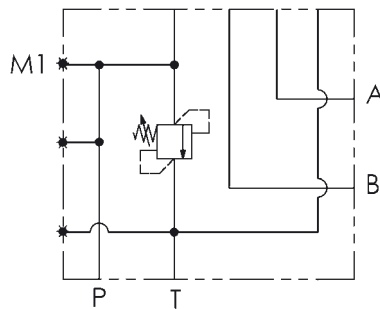
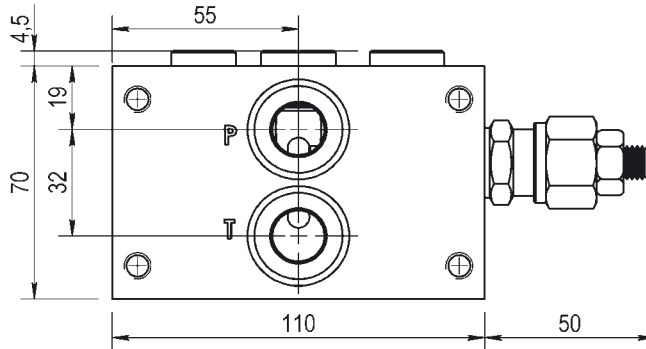
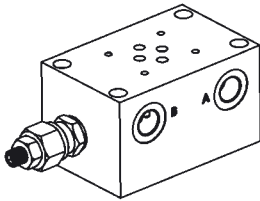
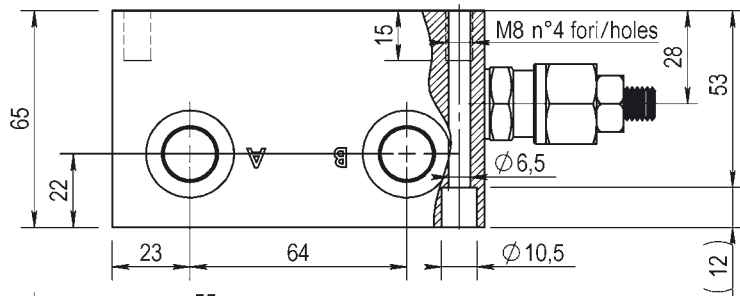
BASE CON COLLEGAMENTO  
P - T POSTERIORI e A - B LATERALI  
SINGLE SUBPLATE  
ON REAR P - T and ON SIDE A - B  
**CETOP 3 - NG 06**



Foro fissaggio CETOP  
Fixing CETOP holes



M1 = G1/4  
Preso manometro  
Testing point



Versione standard in alluminio  
Standard type with aluminium

Pressione massima di lavoro = 300 bar  
Max working pressure = 300 bar

Caratteristiche valvola di massima  
vedere a pagina 24  
For further information regarding relief  
valve please see page 24

**Esempio codice di ordinazione - Ordering example**

**BSA 06 # PL # - #** — 05 = (5-50 bar)  
20 = (30-210 bar)  
35 = (100-350 bar)

Base in alluminio  
Aluminium subplate

CETOP 3 - NG 06

z = predisposta per valvole  
machined for relief valve  
x = con valvola di max  
with built-in relief valve

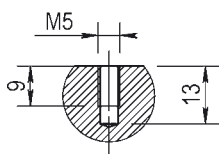
A = (P - T - A - B) G1/4  
B = (P - T - A - B) G3/8

(P - T) posteriori e (A - B) laterali  
On rear (P - T) on side (A - B)

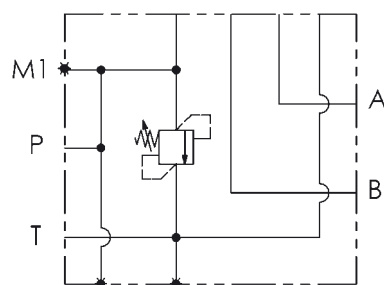
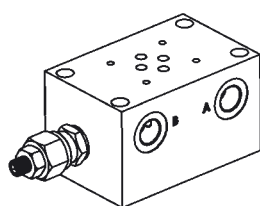
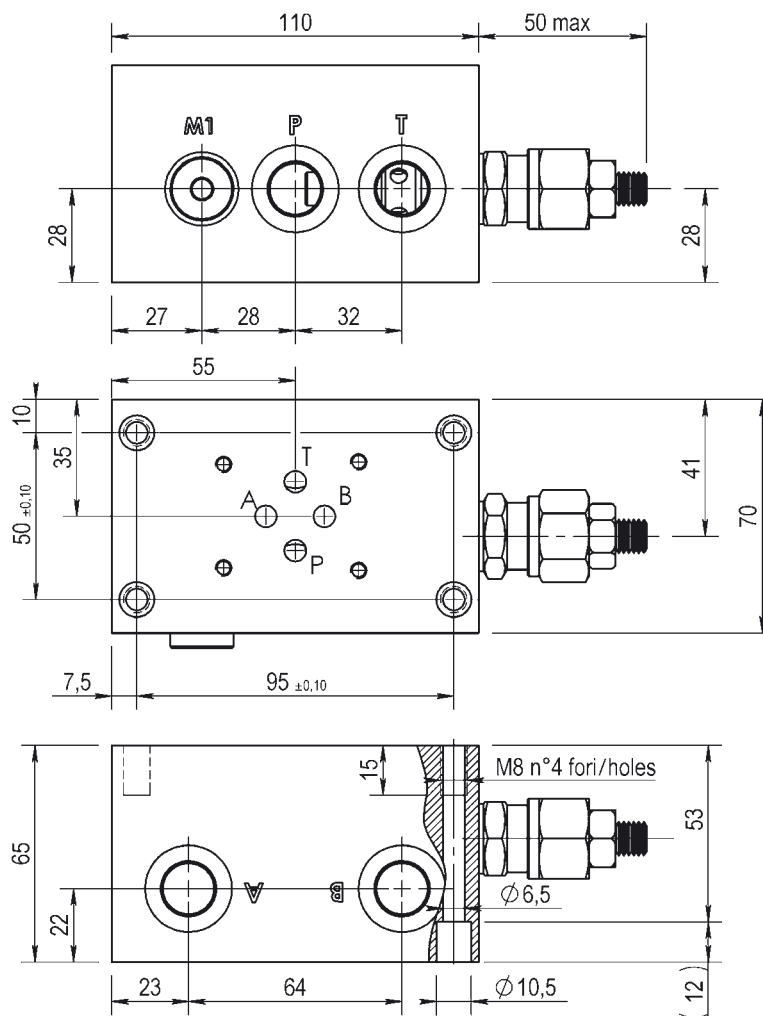
BASE CON COLLEGAMENTO  
P - T LATERALI e A - B LATERALI  
SINGLE SUBPLATE  
ON SIDE P - T - A - B PORTS  
**CETOP 3 - NG 06**



Foro fissaggio CETOP  
Fixing CETOP holes



M1 = G1/4  
Preso manometro  
Testing point



Versione standard in alluminio  
Standard type with aluminium

Pressione massima di lavoro = 300 bar  
Max working pressure = 300 bar

Caratteristiche valvola di massima  
vedere a pagina 24  
For further information regarding relief  
valve please see page 24

**Esempio codice di ordinazione - Ordering example**

**BSA 06 # LL # - #** — 05 = (5-50 bar)  
20 = (30-210 bar)  
35 = (100-350 bar)

Base in alluminio  
Aluminium subplate

CETOP 3 - NG 06

A = (P - T - A - B) G1/4  
B = (P - T - A - B) G3/8

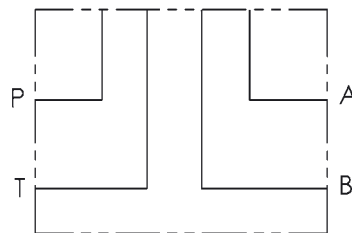
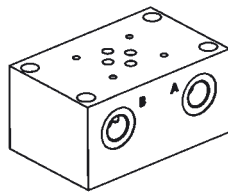
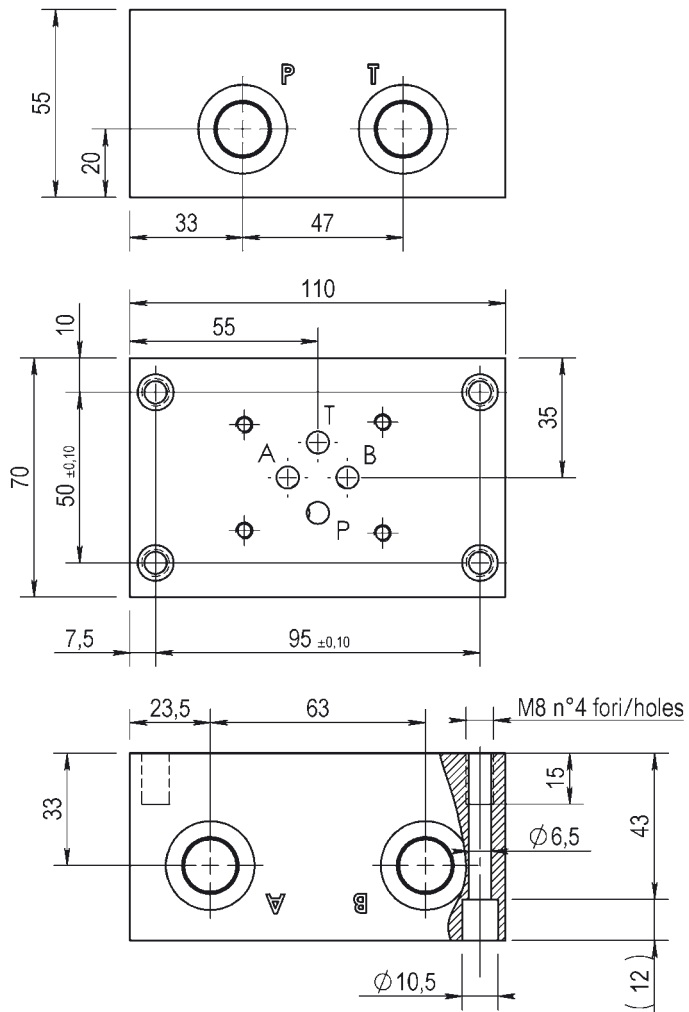
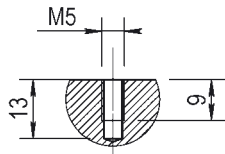
z = predisposta per valvole  
machined for relief valve  
x = con valvola di max  
with built-in relief valve

(P - T) laterali e (A - B) laterali  
On side (P - T - A - B) ports

BASE CON COLLEGAMENTO  
P - T - A - B LATERALI LATO OPPOSTO  
SINGLE SUBPLATE  
WITH REAR ON OPPOSITE SIDE P - T - A - B PORTS  
**CETOP 3 - NG 06**



Foro fissaggio CETOP  
Fixing CETOP holes



Versione standard in alluminio  
Standard type with aluminium

Pressione massima di lavoro = 300 bar  
Max working pressure = 300 bar

**Esempio codice di ordinazione - Ordering example**

**BSA 06 # LL**

Base in alluminio  
Aluminium subplate

CETOP 3 - NG 06

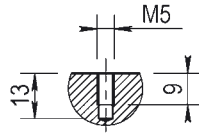
A = (P - T - A - B) G1/4  
B = (P - T - A - B) G3/8

(P - T - A - B) laterali lato opposto  
On side (P - T - A - B)

BASE CON COLLEGAMENTO  
P - T - A - B POSTERIORE  
SINGLE SUBPLATE  
WITH ON REAR P - T - A - B PORTS  
**CETOP 3 - NG 06**

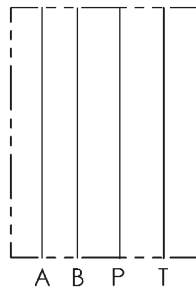
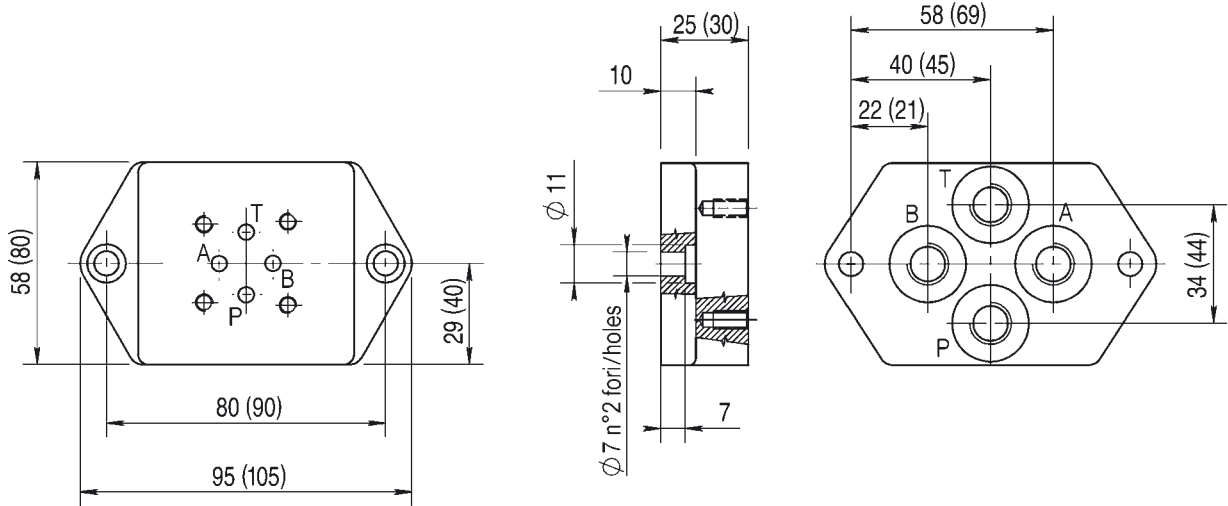


Foro fissaggio CETOP  
Fixing CETOP holes



**N.B.:** Le quote tra parentesi sono da riferirsi alla piastra con attacchi G3/8 e indicano le uniche variazioni

**Attention:** Dimensions in bracket are indicated ports G3/8 subplate



Versione standard in ghisa  
Standard type with cast iron

Pressione massima = 300 bar  
Max working pressure = 300 bar

**Esempio codice di ordinazione - Ordering example**

**BSG 06 # P**

Base in ghisa  
Cast iron subplate

CETOP 3 - NG 06

A = (P - T - A - B) G1/4  
B = (P - T - A - B) G3/8

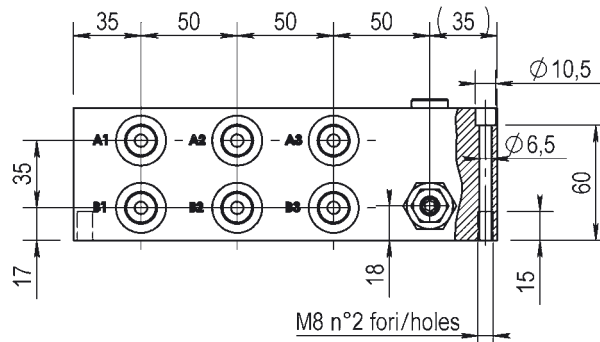
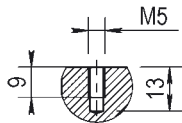
(P - T - A - B) posteriori  
On rear (P - T - A - B) ports

BLOCCO MULTIPLO ATTACCHI LATERALI  
COLLEGAMENTO PARALLELO  
MONOBLOCK WITH ON SIDE PORTS  
PARALLEL CONNECTION

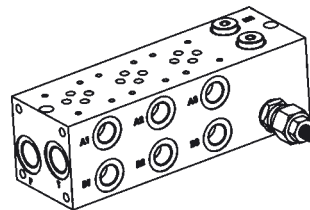
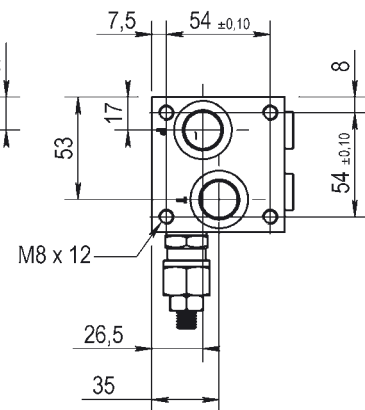
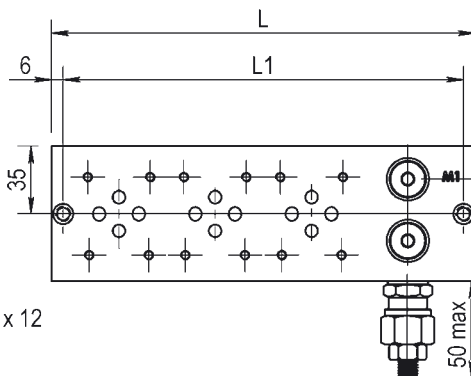
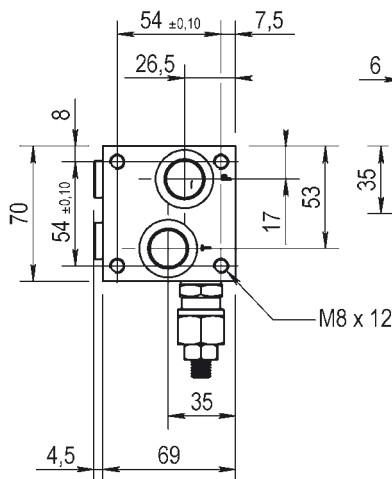


CETOP 3 - NG 06

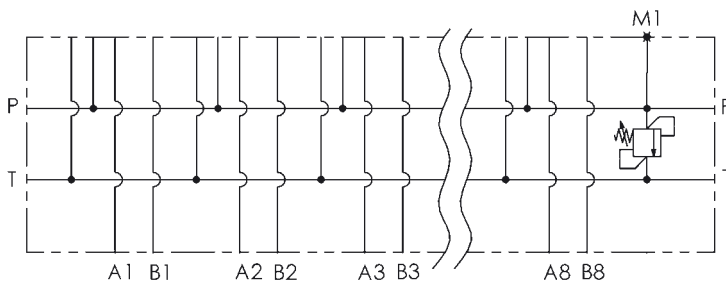
Foro fissaggio CETOP  
Fixing CETOP holes



Postaz. N° N° Stations	L1	L
1	108	120
2	158	170
3	208	220
4	258	270
5	308	320
6	358	370
7	408	420
8	458	470



M1 = G1/4  
Presca manometro  
Testing point



Versione standard in alluminio  
Standard type with aluminium

Pressione massima di lavoro = 300 bar  
Max working pressure = 300 bar

Caratteristiche valvola di massima  
vedere a pagina 24

For further information regarding relief  
valve please see page 24

Esempio codice di ordinazione - Ordering example

BMA 06 P 2 L # # - #

05 = (5-50 bar)  
20 = (30-210 bar)  
35 = (100-350 bar)

Monoblocco alluminio  
Aluminium monoblock

CETOP 3 - NG 06

Collegamento in parallelo  
Parallel connection

Attacchi - Ports (P - T = G1/2 A - B = G3/8)

z = predisposta per valvole  
machined for relief valve  
x = con valvola di max  
with built-in relief valve

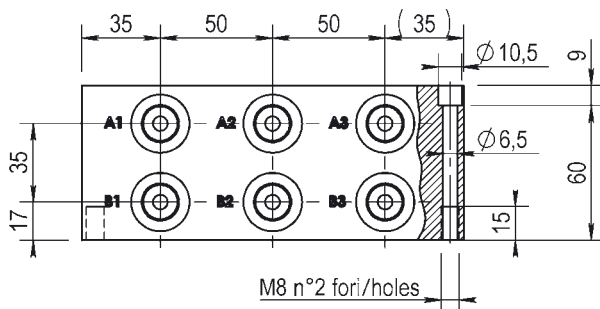
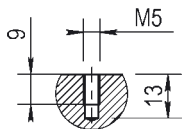
1 - 2 - 3 - 4 - 5 - 6 - 7 - 8  
Numero postazioni - Stations number

Configurazione con attacchi laterali  
On side ports

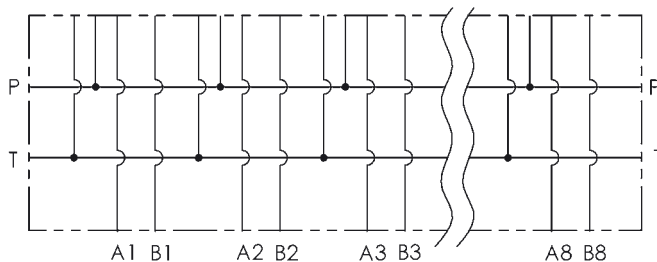
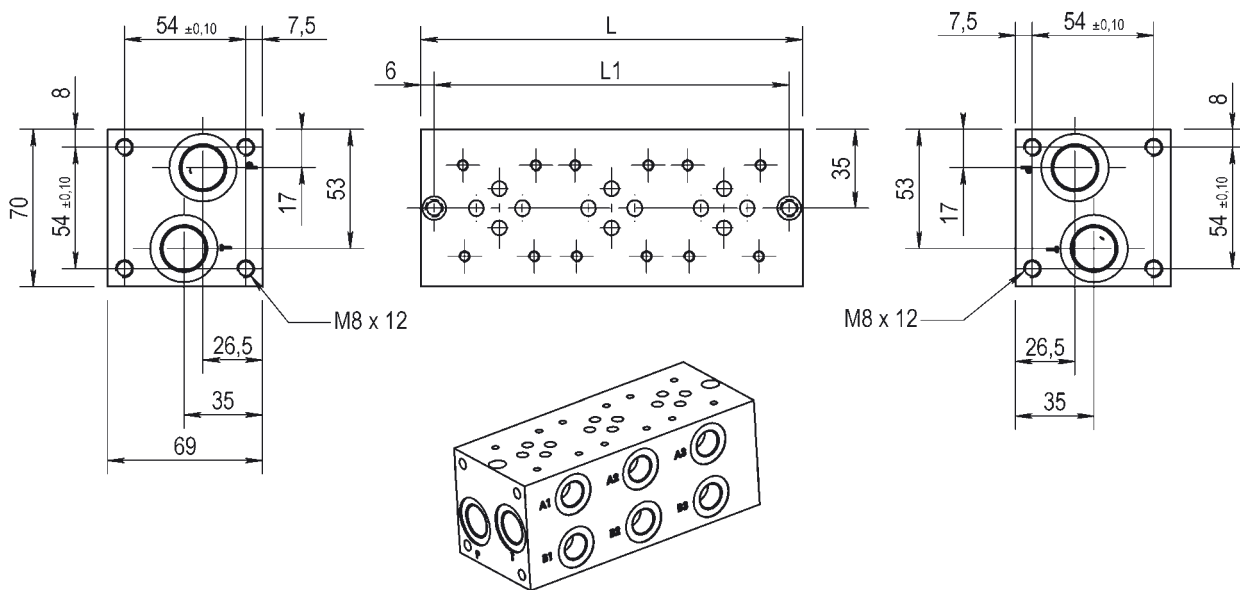
BLOCCO MULTIPLO ATTACCHI LATERALI  
COLLEGAMENTO PARALLELO  
MONOBLOCK WITH ON SIDE PORTS  
PARALLEL CONNECTION  
**CETOP 3 - NG 06**



Foro fissaggio CETOP  
Fixing CETOP holes



Postaz. N° N° Stations	L1	L
1	58	70
2	108	120
3	158	170
4	208	220
5	258	270
6	308	320
7	358	370
8	408	420



Versione standard in alluminio  
Standard type with aluminium

Pressione massima di lavoro = 300 bar  
Max working pressure = 300 bar

**Esempio codice di ordinazione - Ordering example**

**BMA 06 P 2 L #**

Monoblocco alluminio  
Aluminium monoblock

CETOP 3 - NG 06

Collegamento in parallelo  
Parallel connection

Attacchi - Ports (P - T = G1/2 A - B = G3/8)

1 - 2 - 3 - 4 - 5 - 6 - 7 - 8  
Numero postazioni - Stations number

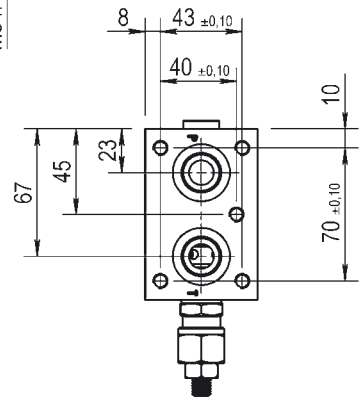
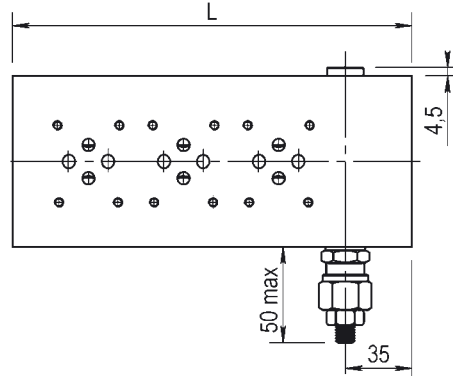
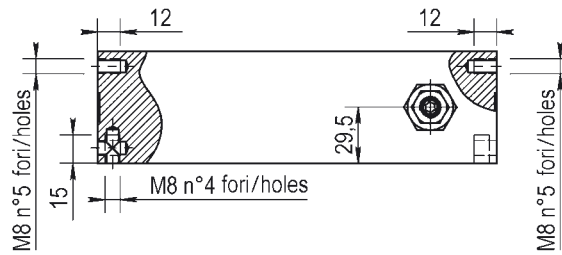
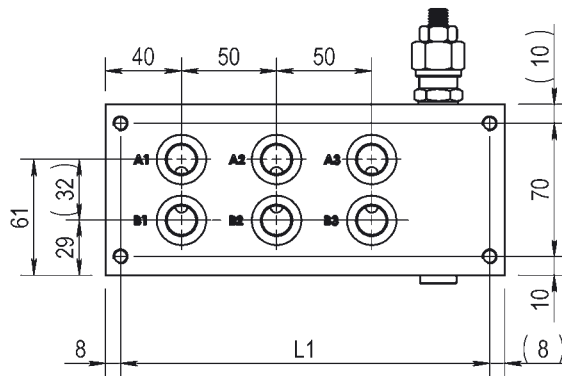
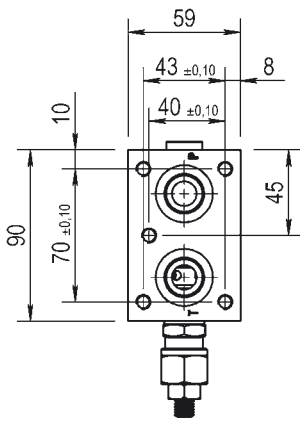
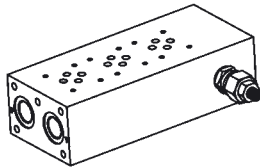
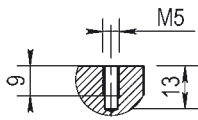
Configurazione con attacchi laterali  
On side ports



BLOCCO MULTIPLO ATTACCHI POSTERIORI  
COLLEGAMENTO PARALLELO  
MONOBLOCK WITH ON REAR PORTS  
PARALLEL CONNECTION  
**CETOP 3 - NG 06**

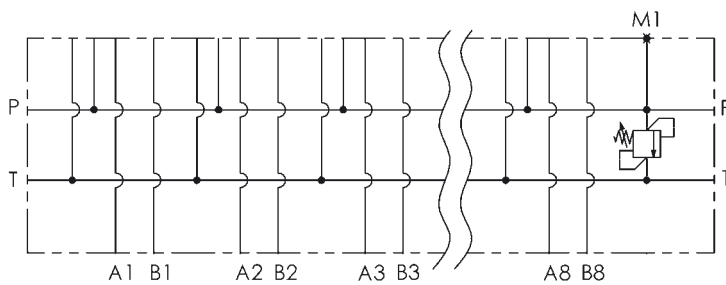


Foro fissaggio CETOP  
Fixing CETOP holes



Postaz. N° N° Stations	L1	L
1	94	110
2	144	160
3	194	210
4	244	260
5	294	310
6	344	360
7	394	410
8	444	460

M1 = G1/4  
Preso manometro  
Testing point



Versione standard in alluminio  
Standard type with aluminium

Pressione massima di lavoro = 300 bar  
Max working pressure = 300 bar

Caratteristiche valvola di massima  
vedere a pagina 24

For further information regarding relief  
valve please see page 24

**Esempio codice di ordinazione - Ordering example**

**BMA 06 P 2 P # # - #** — 05 = (5-50 bar)  
20 = (30-210 bar)  
35 = (100-350 bar)

Monoblocco alluminio  
Aluminium monoblock

CETOP 3 - NG 06

Collegamento in parallelo  
Parallel connection

Attacchi - Ports (P - T = G1/2 A - B = G3/8)

z = predisposta per valvole  
machined for relief valve  
x = con valvola di max  
with built-in relief valve

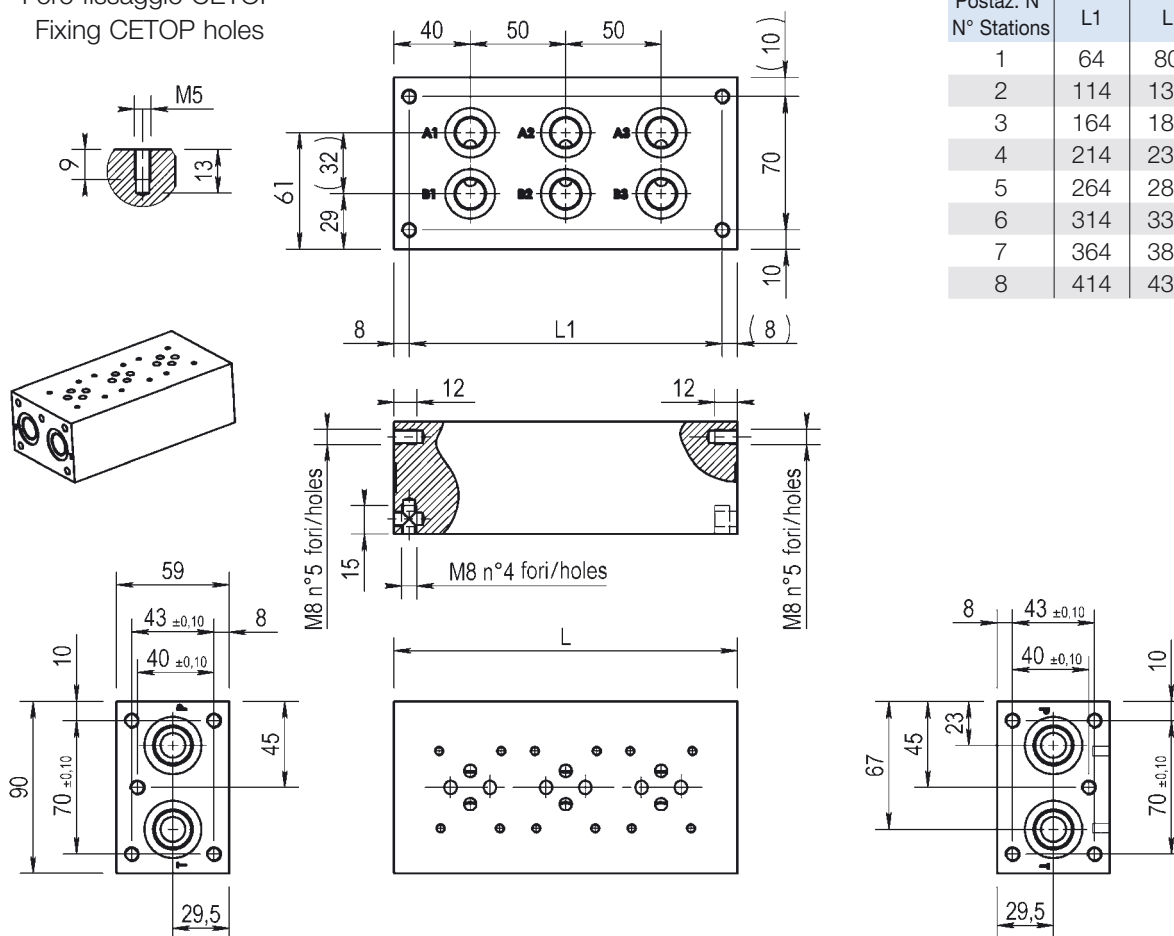
1 - 2 - 3 - 4 - 5 - 6 - 7 - 8  
Numero postazioni - Stations number

Configurazione con attacchi posteriori  
On rear ports

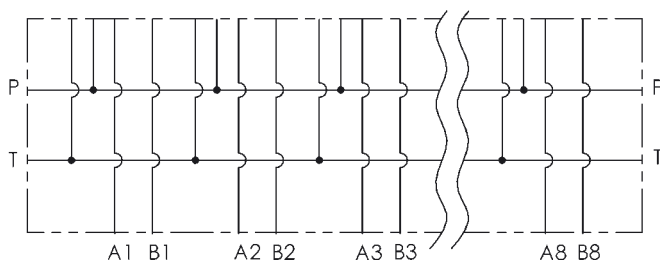
BLOCCO MULTIPLO ATTACCHI POSTERIORI  
COLLEGAMENTO PARALLELO  
MONOBLOCK WITH ON REAR PORTS  
PARALLEL CONNECTION  
**CETOP 3 - NG 06**



Foro fissaggio CETOP  
Fixing CETOP holes



Postaz. N° N° Stations	L1	L
1	64	80
2	114	130
3	164	180
4	214	230
5	264	280
6	314	330
7	364	380
8	414	430



Versione standard in alluminio  
Standard type with aluminium

Pressione massima di lavoro = 300 bar  
Max working pressure = 300 bar

**Esempio codice di ordinazione - Ordering example**

**BMA 06 P 2 P #**

Monoblocco alluminio  
Aluminium monoblock

CETOP 3 - NG 06

Collegamento in parallelo  
Parallel connection

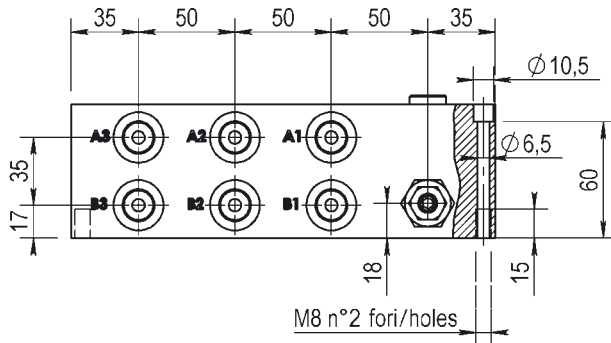
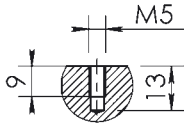
Attacchi - Ports (P - T = G1/2 A - B = G3/8)

1 - 2 - 3 - 4 - 5 - 6 - 7 - 8  
Numero postazioni - Stations number

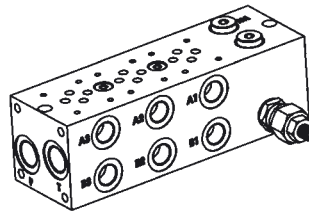
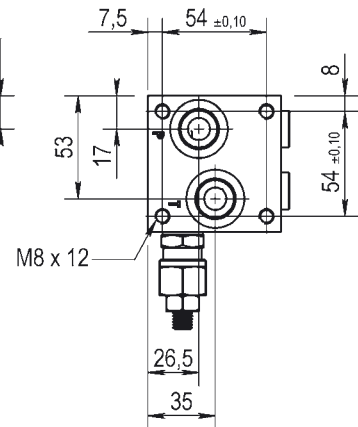
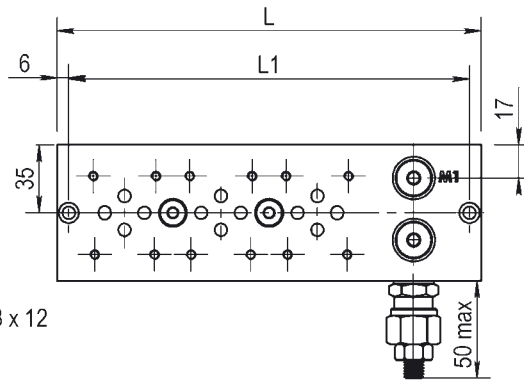
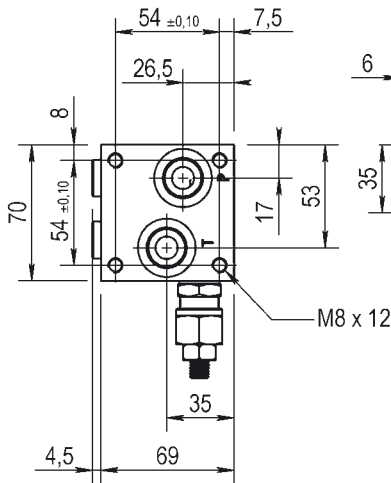
Configurazione con attacchi posteriori  
On rear ports

# CETOP 3 - NG 06

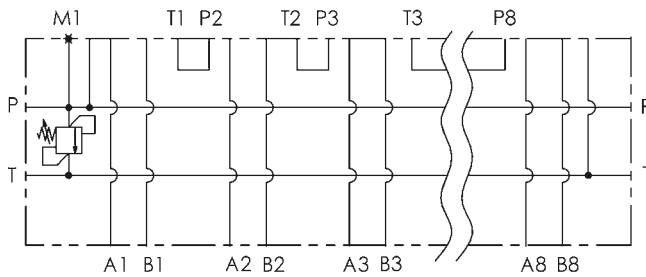
Foro fissaggio CETOP  
Fixing CETOP holes



Postaz. N° N° Stations	L1	L
1	108	120
2	158	170
3	208	220
4	258	270
5	308	320
6	358	370
7	408	420
8	458	470



M1 = G1/4  
Presca manometro  
Testing point



Versione standard in alluminio  
Standard type with aluminium

Pressione massima di lavoro = 300 bar  
Max working pressure = 300 bar

Caratteristiche valvola di massima  
vedere a pagina 24

For further information regarding relief  
valve please see page 24

## Esempio codice di ordinazione - Ordering example

**BMA 06 S 2 L # # - #**

05 = (5-50 bar)  
20 = (30-210 bar)  
35 = (100-350 bar)

Monoblocco alluminio  
Aluminium monoblock

CETOP 3 - NG 06

Collegamento in serie  
Series connection

Attacchi - Ports (P - T = G1/2 A - B = G3/8)

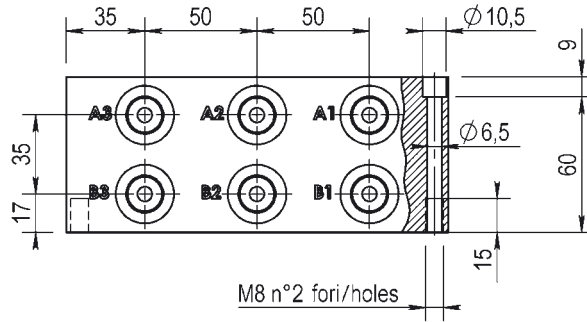
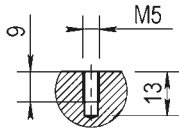
z = predisposta per valvole  
machined for relief valve  
x = con valvola di max  
with built-in relief valve

1-2-3-4-5-6-7-8  
Numero postazioni - Stations number

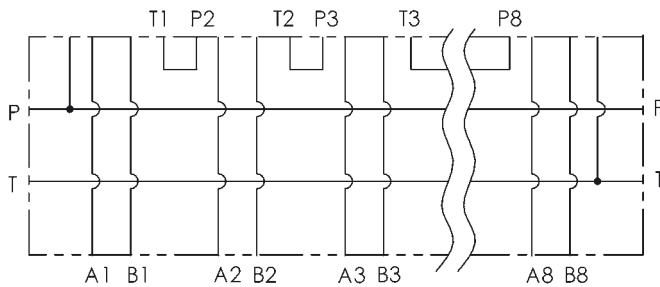
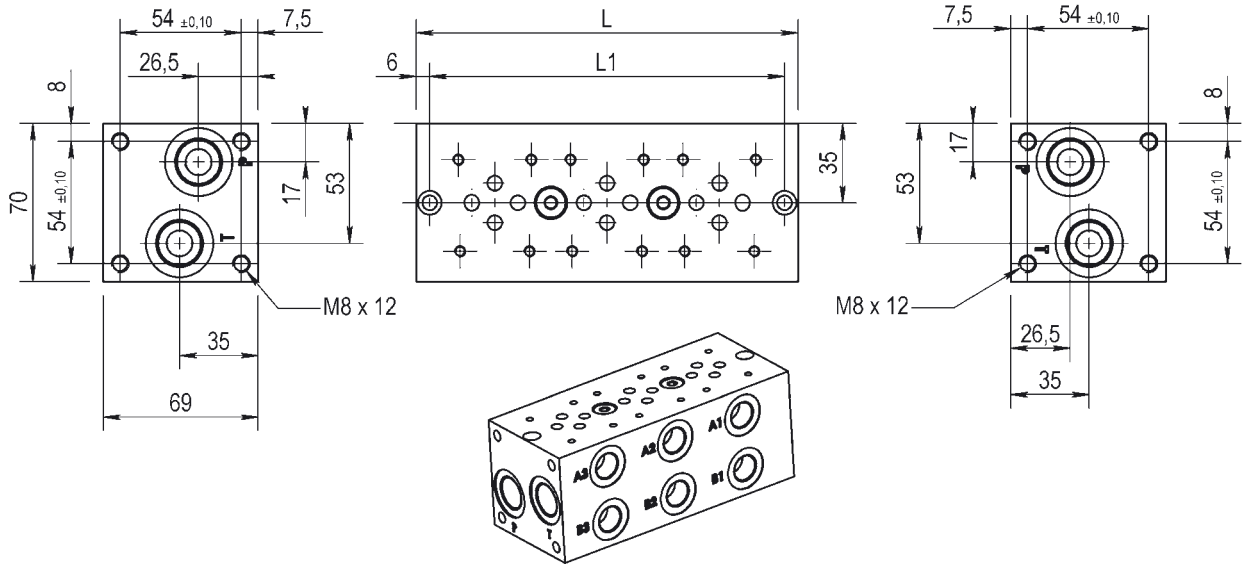
Configurazione con attacchi laterali  
On side ports

# CETOP 3 - NG 06

Foro fissaggio CETOP  
Fixing CETOP holes



Postaz. N° N° Stations	L1	L
1	58	70
2	108	120
3	158	170
4	208	220
5	258	270
6	308	320
7	358	370
8	408	420



Versione standard in alluminio  
Standard type with aluminium

Pressione massima di lavoro = 300 bar  
Max working pressure = 300 bar

## Esempio codice di ordinazione - Ordering example

# BMA 06 S 2 L #

Monoblocco alluminio  
Aluminium monoblock

CETOP 3 - NG 06

Collegamento in serie  
Series connection

Attacchi - Ports (P - T = G1/2 A - B = G3/8)

1 - 2 - 3 - 4 - 5 - 6 - 7 - 8  
Numero postazioni - Stations number

Configurazione con attacchi laterali  
On side ports